

43/180

# BOCA GROVE PLANTATION

P. U. D.

18

BEING PORTIONS OF SECTIONS 16 AND 21, TOWNSHIP 47 SOUTH, RANGE 42 EAST, PALM BEACH COUNTY, FLORIDA AND A REPLAT OF A PORTION OF THE PLAT OF BOCA GROVE, RECORDED IN PLAT BOOK 32, PAGES 12 AND 13 OF THE PUBLIC RECORDS OF PALM BEACH COUNTY, FLORIDA.

NO.	RADIUS	DELTA	ARC LGT.	TANG.
1	1055.00'	23°05'54"	535.79'	273.81'
2	1245.00'	13°50'00"	300.59'	151.03'
3	1225.00'	17°00'00"	363.46'	183.08'
4	1745.00'	11°30'00"	350.24'	175.71'
5	1745.00'	03°17'14"	100.11'	50.07'
6	1745.00'	08°12'46"	250.13'	125.28'
7	290.00'	72°00'00"	364.42'	210.70'
8	290.00'	34°45'00"	175.89'	90.74'
9	290.00'	37°15'00"	188.54'	97.74'
10	240.00'	74°01'25"	310.49'	181.26'
11	740.00'	74°00'00"	955.74'	557.63'
12	740.00'	46°52'25"	605.93'	320.79'
13	740.00'	27°01'35"	350.95'	178.52'
14	305.00'	19°04'52"	101.57'	51.26'
15	345.00'	10°15'25"	61.76'	30.96'
16	1030.00'	05°44'49"	103.31'	51.70'
17	1030.00'	05°50'27"	105.00'	52.55'
18	1030.00'	02°08'13"	38.45'	19.23'
19	1220.00'	01°43'00"	36.55'	18.28'
20	1220.00'	04°48'43"	102.50'	51.28'
21	1220.00'	02°23'22"	53.01'	26.51'
22	1250.00'	01°46'55"	38.86'	19.43'
23	1250.00'	04°35'01"	100.00'	50.03'
24	1250.00'	01°28'05"	32.03'	16.02'
25	1720.00'	01°28'54"	44.48'	22.24'
26	200.00'	77°00'00"	268.78'	153.09'
27	700.00'	74°00'00"	904.08'	517.49'

NO.	RADIUS	DELTA	ARC LGT.	TANG.
28	1080.00'	19°09'25"	361.10'	182.25'
29	1080.00'	06°35'51"	124.36'	62.25'
30	1270.00'	13°30'00"	306.62'	154.06'
31	1200.00'	04°15'06"	83.05'	44.54'
32	1200.00'	04°47'51"	100.48'	50.27'
33	1200.00'	04°46'35"	100.04'	50.05'
34	1200.00'	03°10'28"	66.48'	33.25'
35	1770.00'	00°23'39"	12.18'	6.09'
36	1770.00'	03°14'30"	100.14'	50.08'
37	1770.00'	03°14'15"	100.02'	50.02'
38	1770.00'	03°14'38"	100.21'	50.12'
39	1770.00'	01°22'38"	42.72'	21.36'
40	25.00'	48°11'23"	21.03'	11.18'
41	50.00'	41°31'21"	36.32'	19.00'
42	50.00'	60°00'00"	52.36'	28.87'
43	50.00'	54°45'25"	47.78'	25.89'
44	1720.00'	00°50'33"	25.29'	12.65'
45	1720.00'	05°47'15"	173.74'	86.94'

NO.	RADIUS	DELTA	ARC LGT.	TANG.
46	315.00'	17°44'41"	97.56'	49.17'
47	315.00'	08°32'56"	47.00'	23.54'
48	50.00'	66°25'32"	57.97'	32.74'
49	50.00'	53°51'23"	47.00'	25.40'
50	50.00'	63°14'21"	55.19'	30.78'
51	315.00'	10°36'16"	58.30'	29.23'
52	315.00'	18°11'21"	100.00'	50.42'
53	215.00'	11°59'32"	45.00'	22.58'
54	215.00'	47°21'36"	177.72'	94.29'
55	215.00'	14°46'18"	55.43'	27.87'
56	175.00'	162°24'56"	436.07'	220.88'
57	175.00'	17°27'54"	53.34'	26.88'
58	175.00'	53°51'29"	164.50'	88.89'
59	175.00'	37°14'04"	113.73'	58.95'
60	190.00'	34°11'31"	113.38'	58.44'

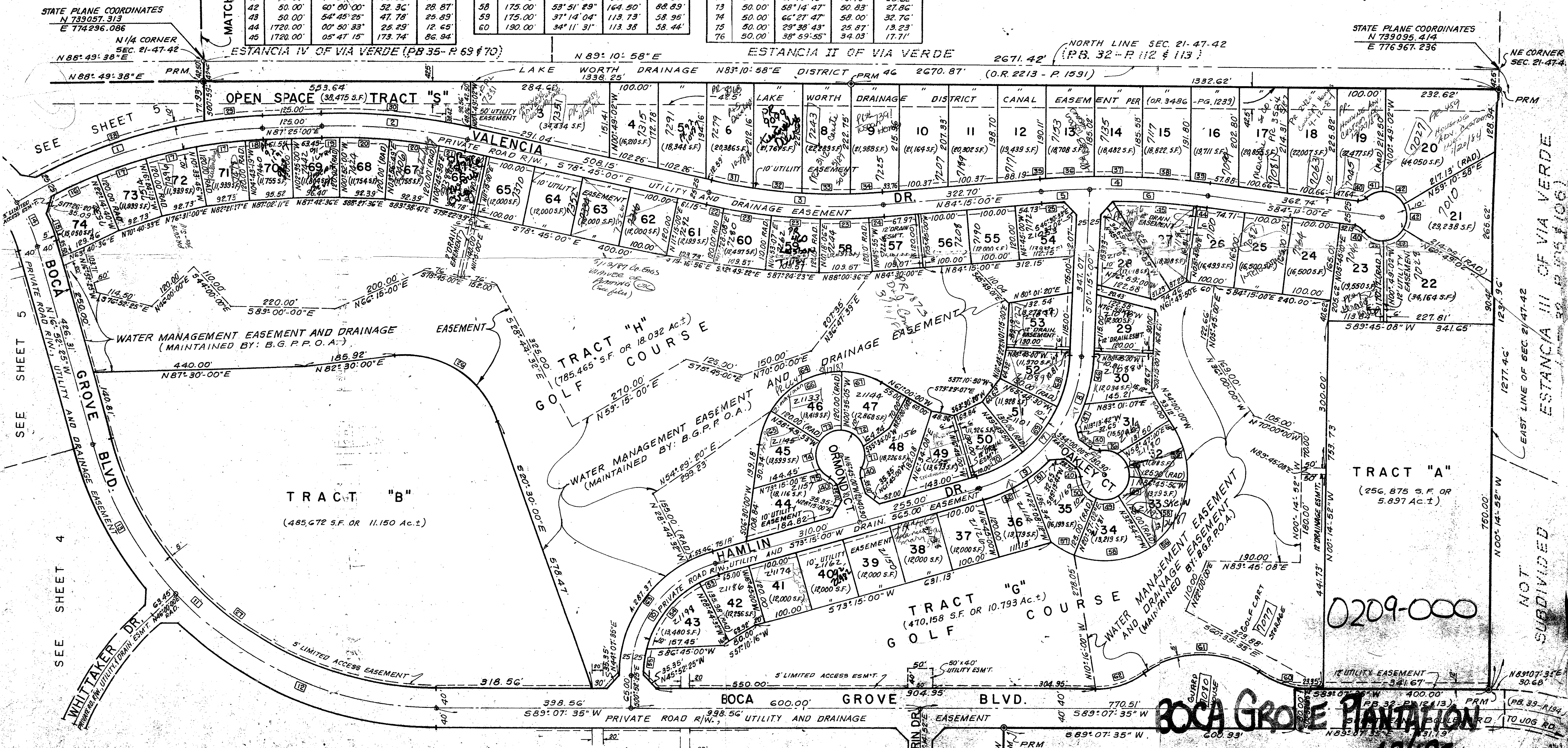
NO.	RADIUS	DELTA	ARC LGT.	TANG.
61	215.00'	69°03'20"	259.13'	147.92'
62	175.00'	34°51'52"	106.49'	54.95'
63	265.00'	74°07'25"	342.83'	200.14'
64	170.00'	112°30'00"	333.79'	254.42'
65	170.00'	24°40'07"	73.19'	37.17'
66	170.00'	58°14'48"	172.82'	94.71'
67	170.00'	29°35'05"	87.78'	44.89'
68	265.00'	22°56'30"	106.11'	53.77'
69	265.00'	25°58'40"	120.15'	61.13'
70	265.00'	23°04'50"	106.75'	54.11'
71	50.00'	60°44'43"	53.01'	29.30'
72	50.00'	61°16'46"	53.48'	29.62'
73	50.00'	58°14'47"	50.83'	27.86'
74	50.00'	66°27'47"	58.00'	32.76'
75	50.00'	29°38'43"	25.87'	13.23'
76	50.00'	38°59'55"	34.03'	17.11'

DATE: APRIL 1981

GRAPHIC SCALE  
100' 50' 0 100' 200'

SCALE: 1" = 100'

**NOTES**  
 SUNSTREAM BOULEVARD RIGHT OF WAY ABANDONED BY RESOLUTION No. R-81-939 ON JULY 28, 1981. RESOLUTION RECORDED AT BOOK 3581, PAGES 1357 AND 1358.  
 THREE DRAINAGE EASEMENTS ADJACENT TO VACATED SUNSTREAM BOULEVARD WERE VACATED BY RESOLUTION No. 81-1564 ON DECEMBER 15, 1981, AND RESOLUTION RECORDED AT BOOK \_\_\_\_\_ PAGES \_\_\_\_\_



STATE PLANE COORDINATES  
 N 739057.313  
 E 774296.086  
 N 1/4 CORNER  
 SEC. 21-47-42  
 N 88° 49' 38" E

STATE PLANE COORDINATES  
 N 739095.414  
 E 776967.236  
 NE CORNER  
 SEC. 21-47-42